



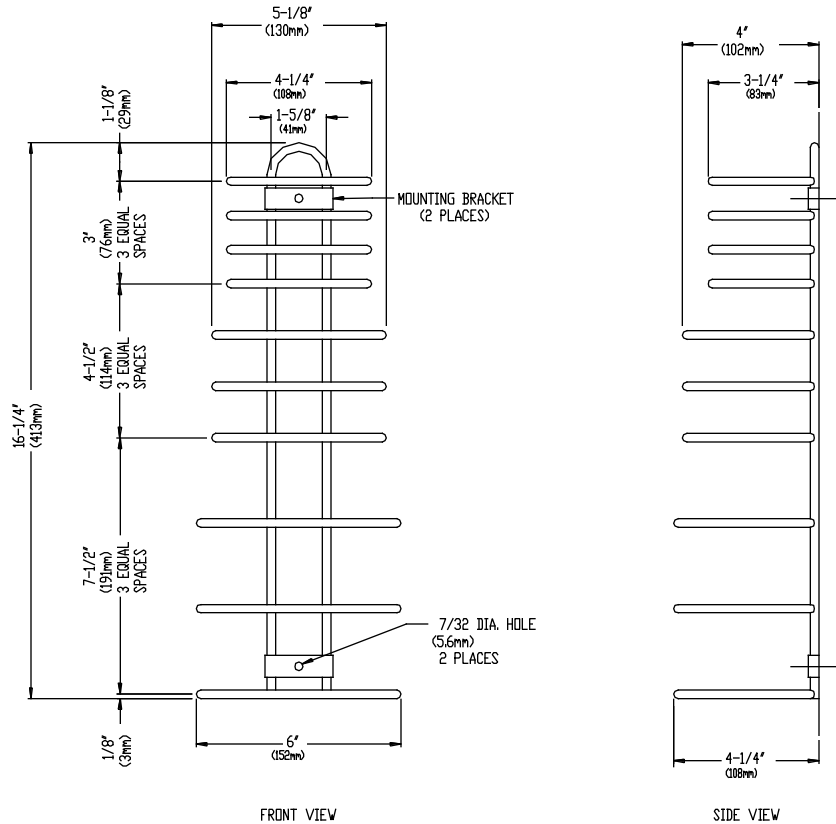
AMERICAN SPECIALTIES, INC.
 441 Saw Mill River Road, Yonkers, NY 10701 (914) 476-9000

MODEL No: 0706/0707/0708

ISSUED: 1-87

REVISED: 9-96

WASH CLOTH, BATH AND HAND TOWEL HOLDER



(0707 SHOWN)

SCHEDULE OF AVAILABILITY					
Model N ^o	Sets Capacity	Height	Model N ^o	Sets Capacity	Height
0706	2	11-1/4" (286mm)	0708	4	21-1/4" (540mm)
0707	3	16-1/4" (413mm)			

SPECIFICATION

Wash Cloth, Bath and Hand Towel Holder shall provide storage capacity for fresh folded wash cloths and towels and shall be fabricated of 1/4" (6mm) dia. steel wire with polished chrome finish. Unit shall hold folded sets of bath towels, hand towels and wash cloths with capacity for sets per schedule and specified by option. Mounting brackets shall be welded at top and bottom of each unit.

Wash Cloth, Bath and Hand Towel Holder shall be Model N^o 0706 or (N^o0707 or N^o0708) as fabricated by American Specialties Inc., 441 Saw Mill River Road, Yonkers, New York 10701-4913

INSTALLATION

For compliance with ADA Accessibility Guidelines, install unit so that top of holder is 54" (1372mm) maximum above finished floor (AFF) if clear floor side reach access is only provided or 48" (1219mm) max. AFF if clear floor forward reach access is only provided. Surface mount unit and secure to wall with two (2) N^o10 self tapping screws (by others) through holes provided in mounting brackets.

OPERATION

Folded wash cloths and towels are placed in between holder rings. Cloths and towels may be removed or replaced one at a time without dislodging entire stack.

Accessory Specialties

AMERICAN DISPENSER

Desert Ray Products

WATROUS INC.