



# AMERICAN SPECIALTIES, INC.

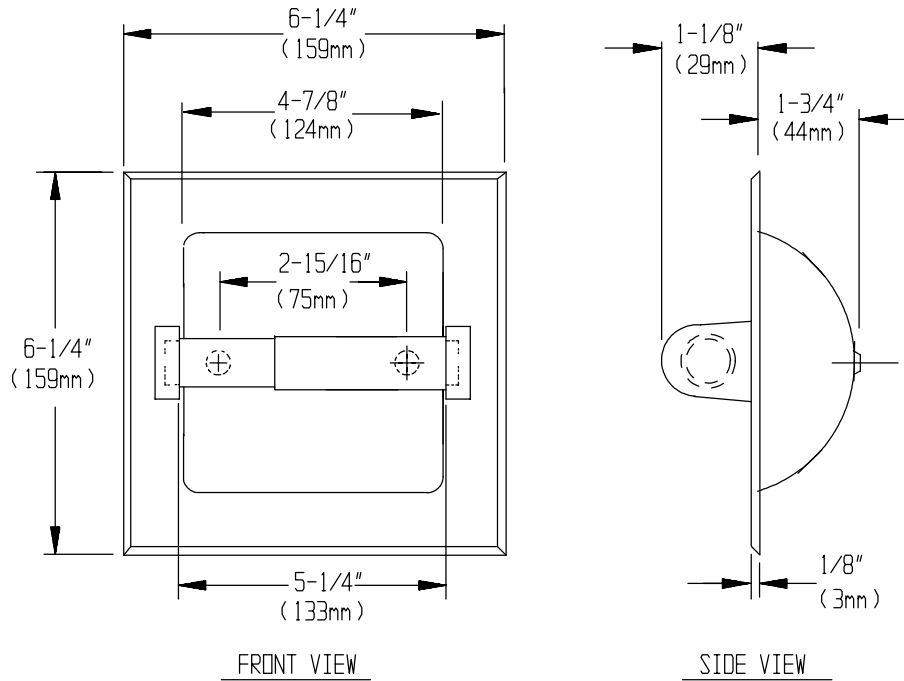
441 Saw Mill River Road, Yonkers, NY 10701 (914) 476-9000

MODEL No: 0402-Z

ISSUED: 4-95

REVISED: 9-04

## RECESSED TOILET PAPER HOLDER



### SPECIFICATION

Recessed Toilet Paper Holder shall hold and dispense all standard core roll tissue, up to 5" dia. (127 mm) and be fabricated of Zamac, of seamless one piece construction. Back shall have two (2) perforated lugs for wet wall anchoring or two (2) dimple holes for dry wall installation. Paper roll shall be held by a plastic, spring loaded removable roller held between two (2) solid bars. All exposed surfaces shall be triple plated with copper, nickel and chrome to a mirror finish.

**Recessed Toilet Paper Holder shall be Model N° 0402-Z of American Specialties, Inc. 441 Saw Mill River Road Yonkers, New York 10701- 4913**

### INSTALLATION

Wet wall installation: Apply grout to back of unit and on perforated lugs and push unit into opening.

Dry wall installation: Fasten unit to wall opening with (2) two N° 10 self tapping screws (supplied) through dimpled holes at back of shell.

For compliance with ADA Accessibility Guidelines unit should be installed with centerline of roller 19" (483mm)min. AFF to 42" (1067mm) max AFF and 39" (944mm) max. from rear wall behind commode.

**Rough Wall Opening (RWO) required is..... 5-1/4" W x 5-1/4" H x 2" D (133mm x 133mm x 51mm).**

### OPTIONS

(indicate option with check mark ✓)

Wet wall install	<input type="checkbox"/>
Dry wall install	<input type="checkbox"/>

Accessory Specialties

AMERICAN DISPENSER

Desert Ray Products

**WATROUS** .INC.