



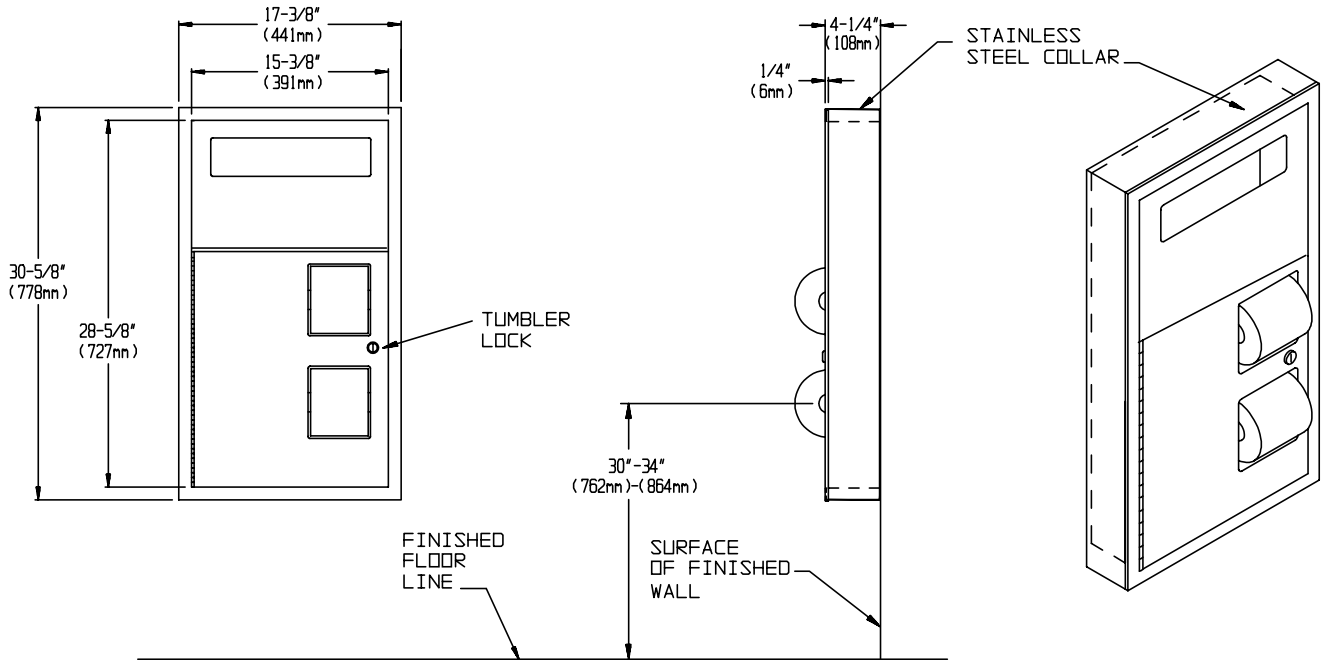
AMERICAN SPECIALTIES, INC.

MODEL No: 0486

ISSUED: 1-87

REVISED: 9-04

SURFACE MOUNTED SEAT COVER & TOILET PAPER DISPENSER



SPECIFICATION

Surface Mounted Seat Cover and Toilet Paper Dispenser shall hold and dispense 1000 paper seat covers and two rolls (standard or 1000 sheet) toilet tissue. Frame, cabinet, toilet paper dispensers and surface mounting collar shall be fabricated of alloy 18-8 stainless steel, type 304, 22 gauge, door shall be 18 gauge and seat cover dispenser panel shall be 20 gauge. All exposed surfaces shall have N°4 satin finish and be protected by a plastic PVC film easily removed after installation. Seat cover dispenser cut-out shall have a fully deburred edge for snag-free dispensing and user safety. Dispenser door shall be attached to cabinet at side with a full length 3/16" (5mm) dia. stainless steel multi-staked piano hinge and shall be held closed with a tumbler lock keyed alike to other ASI washroom equipment. Face trim shall be 1" (25mm) wide formed from one piece with no mitres or welding and have 1/4" (6mm) square return to wall. Structural assembly of all components shall be of welded construction. Cabinet shall include two theft resistant toilet paper spindles.

-
-

INSTALLATION

A Stainless Steel Collar (Model N° SM) is slid over the rear of cabinet; cabinet is then surface mounted to partition or wall using screws (by others) through concealed mounting holes provided.

OPERATION

Seat covers are self-feeding until supply is depleted. Toilet paper rolls feed freely until depleted, level of supply is constantly visible for low level warning.

Accessory Specialties

AMERICAN DISPENSER

Desert Ray Products

WATROUS INC.