



AMERICAN SPECIALTIES, INC.

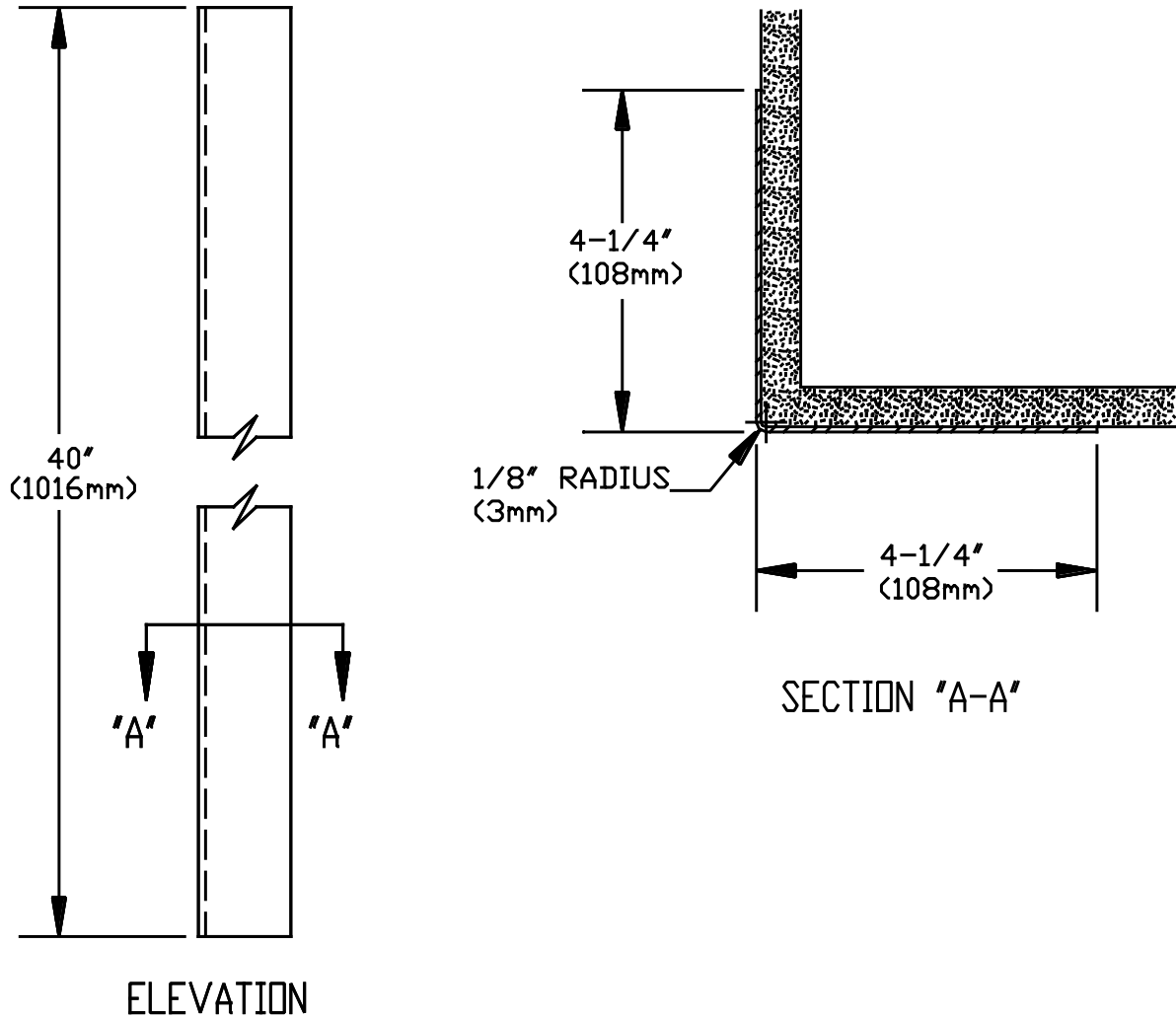
441 Saw Mill River Road, Yonkers, NY 10701 (914) 476-9000

MODEL No: 0533-40

ISSUED: 1-87

REVISED: 4-98

SURFACE MOUNTED OUTSIDE CORNER GUARD



SPECIFICATION

Surface Mounted Outside Corner Guard shall be fabricated of alloy 18-8 stainless steel, type 304, №18 gauge with a 1/8" (3.2mm) radius outside edge. Width of guard on each side shall be 4-1/4" (108mm) x 40" long (1016mm). All exposed edges shall be smooth and fully deburred. Back surface shall be rough textured to facilitate adherence to wall surface. All exposed surfaces shall be №4 satin finish and be protected during shipment with a PVC film easily removable after installation.

Surface Mounted Outside Corner Guard shall be Model № 0533-40 as fabricated by American Specialties, Inc. 441 Saw Mill River Road Yonkers, New York 10701-4913

INSTALLATION

Unit is surface mounted on finished wall by applying adhesive to back of guard and wall as per manufacturers recommendations. Guard can be mounted flush to floor or at base height when bull-nose floor base is used.

Accessory Specialties

AMERICAN DISPENSER

Desert Ray Products

WATROUS INC.