



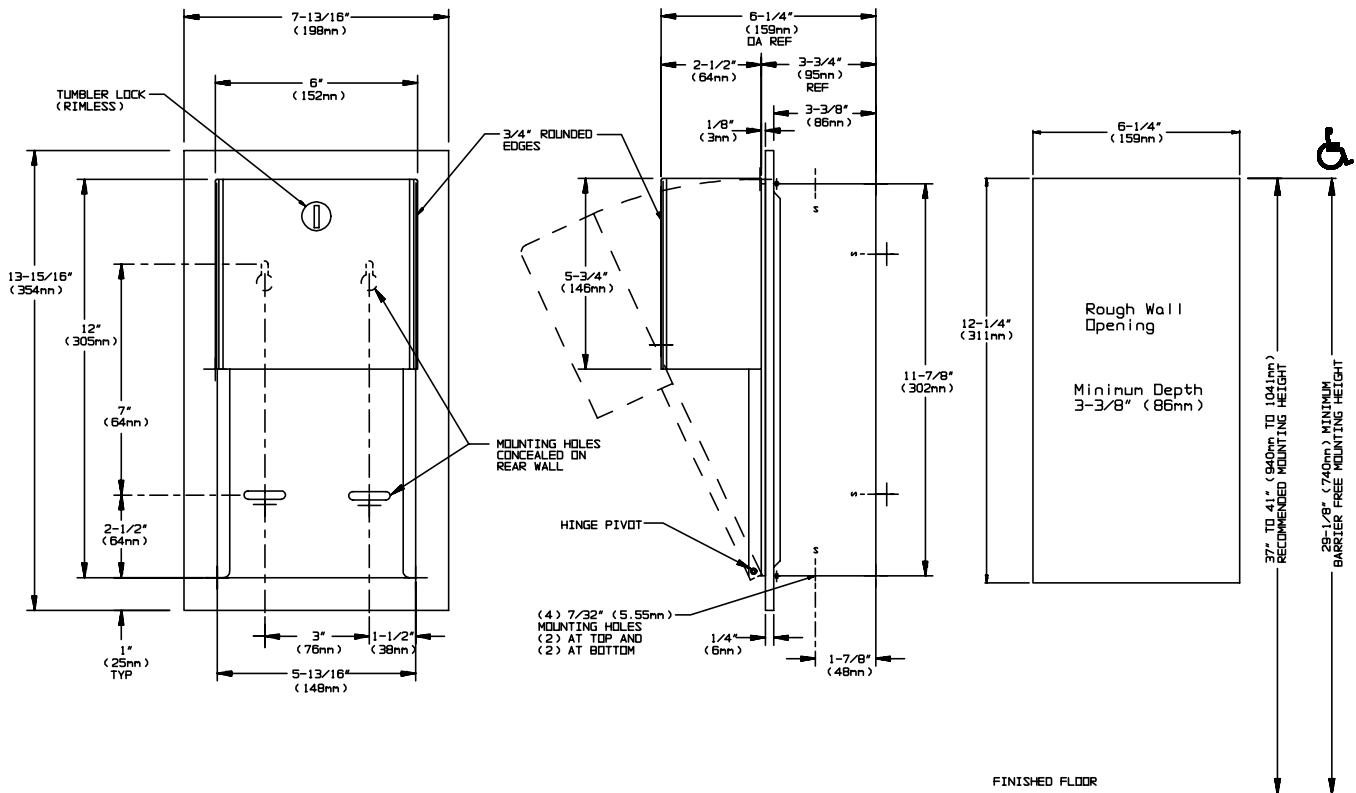
AMERICAN SPECIALTIES, INC.
441 Saw Mill River Road, Yonkers, NY 10701 (914) 476-9000

MODEL No: 9031

ISSUED: 1-87

REVISED: 5-03

PROFILE COLLECTION RECESSED MOUNTED TWIN HIDE-A-ROLL TOILET TISSUE DISPENSER



SPECIFICATION

Profile Collection Recessed Mounted Twin Hide-A-Roll Toilet Tissue Dispenser shall hold and dispense two (2) standard or two (2) 5-1/4" dia. (133mm) 1800 sheets tissue rolls and shall have door, door frame, and dispensing mechanism guide tracks fabricated of alloy 18-8 stainless steel, type 304, 18 gauge (1.2mm); cabinet body shall be same grade, 22 gauge (.8mm). All exposed surfaces shall be N° 4 satin finish and be protected during shipment with a PVC film easily removable after installation. Internal mechanism levers shall be fabricated of molded high-impact resistant plastic for smooth operation. Structural assembly of body and door components shall be of welded construction. Door hinge shall be of heavy-duty stainless steel 3/16" (4.8mm) dia. rivets. Door shall have 3/4" (19mm) rounded vertical edge with all corners welded and ground smooth with no open miters and shall be held closed with a flush rimless tumbler lock keyed alike to other ASI Washroom Equipment. Vandal resistant rollers shall be of molded high-impact resistant plastic with integral molded-in stainless steel end pins and two (2) rollers shall be supplied.

Profile Collection Recessed Mounted Twin Hide-a-Roll Toilet Tissue Dispenser shall be Model N° 9031 as manufactured by American Specialties, Inc. 441 Saw Mill River Road Yonkers, New York 10701-4913

INSTALLATION

Unit is recessed mounted in wall using four (8) N° 10 self tapping screws (by others). Top two mounting holes through back are "keyhole" slots for ease in hanging unit on pre-installed screws. Bottom two mounting holes are horizontal slots for ease of adjustment. Alternate mounting holes are provided (2) in top and (2) in bottom of unit for installation convenience. For compliance with ADA Accessibility Guidelines, the top of the frame should be installed a minimum of 30" (762mm) above finished floor.

Rough wall opening should be 6-1/4" W x 12-1/4" H x 3-3/8" D (159mm x 311mm x 86mm).

OPERATION

Reloading instructions are printed on graphic label inside door. Bottom roll is depleted prior to top roll automatically dropping into lower position for use. Empty rollers can not be removed without key unlocking door.