



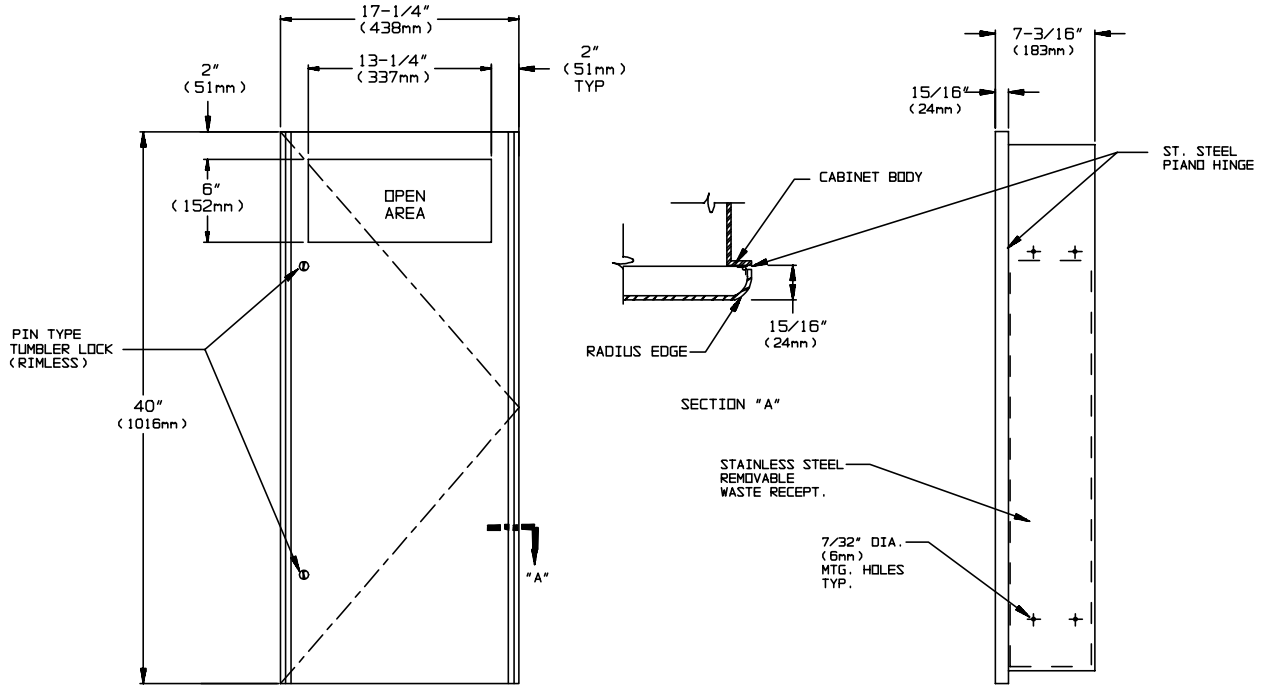
AMERICAN SPECIALTIES, INC.

MODEL No: 9474

ISSUED: 1-87

REVISED: 9-04

RECESSED WASTE RECEPTACLE



**SPECIFICATION**

Recessed Waste Receptacle unit shall have a waste capacity of 14 gal. (53 liters) and shall be fabricated of alloy 18-8 stainless steel, type 304. Cabinet shall be fabricated from 20 gauge and shall have a 1" (25mm) wide perimeter trim to lay flat against wall. Full face door shall be fabricated from one piece of 16 gauge with a 15/16" (34mm) square return to wall at top and bottom and 3/4" (19mm) radius returns to wall on vertical edges and shall have no visible welding or open seams. Door shall be attached to the edge of unit with a full length 3/16" (5mm) dia. stainless steel multi-staked piano hinge and shall be held closed with two (2) tumbler locks keyed alike to other ASI washroom equipment. Waste container shall be fabricated of heavy duty stainless steel with a finger grip for easy removal. All exposed surfaces shall have a N°4 satin finish.

**INSTALLATION**

Unit is mounted in wall recess using N° 10 self tapping screws (by others) through concealed mounting holes provided. For compliance with ADA Accessibility Guidelines the unit should be installed so that the center of the waste receptacle opening is 54" (1372mm) max. above finished floor (AFF) when clear floor side reach access is provided or 48" (1219mm) max. AFF if clear floor forward reach access is only provided.

**Rough Wall Opening (RWO) required is .....15-3/4"W x 38-1/2"H x 6-1/4"D (400mm x 978mm x 159mm)**

**OPERATION**

Waste is inserted through opening at upper section of unit. Waste container is emptied manually on cycle determined by maintenance needs. Locked door prevents unauthorized access or removal.

Accessory Specialties

AMERICAN DISPENSER

Desert Ray Products

WATROUS .INC.