



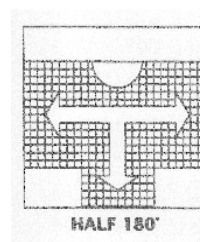
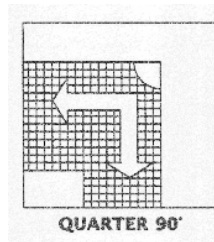
**MEEK MANUFACTURING COMPANY**  
PO Box 11200  
Fort Smith, Arkansas 72917-1200  
800-643-2533 – Fax 479-646-6231  
[www.meekmirrors.com](http://www.meekmirrors.com)

**Installation  
Instructions**

Dome Panaramic® Mirror	DATE 01/05/2006	MODEL M1800	SHEET NO. 6-00
------------------------	--------------------	----------------	-------------------

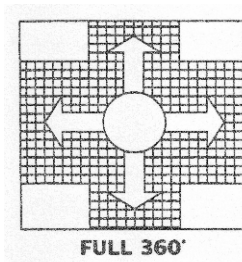
## Installation Instructions

### 90° and 180° Panaramic Dome Mirror



- 1) Place Panaramic® mirror on wall/ceiling where desired.
- 2) Lightly mark outside dimension of Panaramic® mirror.
- 3) Place hook or hooks inside marks on wall as described in step #2. Place hooks on wall as high as possible.
- 4) Attach springs to hooks on wall.

### 360° Panaramic® Dome Mirror



- 1) Note: If wires seem to be loose at centered washer, additional tension may be created by squeezing inverted “U” area of wire ( in center of each wire with pliers.)
- 2) Mirror can now be hung with any cord, wire or chain
- 3) Attach cord to center washer.
- 4) To level mirror, attach second cord to lowest end of mirror at inverted “U” area of wire and tie other end of leveling cord to midpoint of center cord.